

Warm-Up 2/22/18

TEST TOMORROW!!

common diff.
slope = -20

1) Write an explicit equation: $y = 100 - 20x$

$$y = -20n + 100$$

x	0	1	2	3	4
y	100	80	60	40	20

arithmetic, linear → graph is a straight line!

2) Write an explicit equation: $y = 8 \cdot 6^x$

x	0	1	2	3
y	8	48	288	1,728

geometric

x6

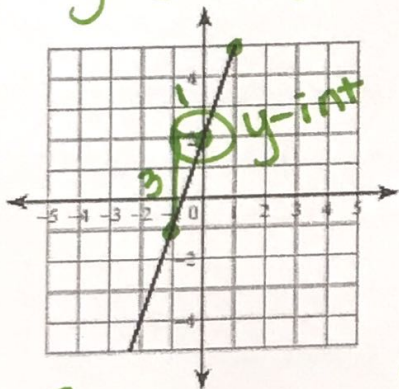
x6

x6 exponential
↳ curve!

Write explicit equations for the graphs below:

3)

$$y = 3x + 2$$



x	y
-1	-1
0	2
1	5

↳ +3
↳ +3

$$\frac{3}{1} = m$$

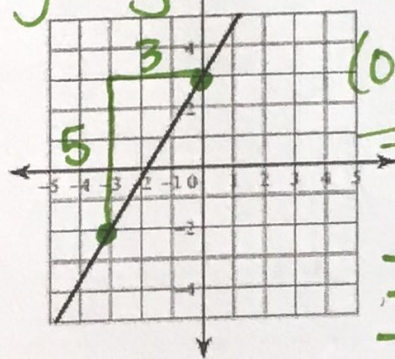
$$2 = b$$

$$y = mx + b$$

$$y = 3x + 2$$

4)

$$y = \frac{5}{3}x + 3$$



$(0, 3)$ $(-3, -2)$

$$\frac{-2 - 3}{-3 - 0} = \frac{-5}{-3} = \frac{5}{3}$$