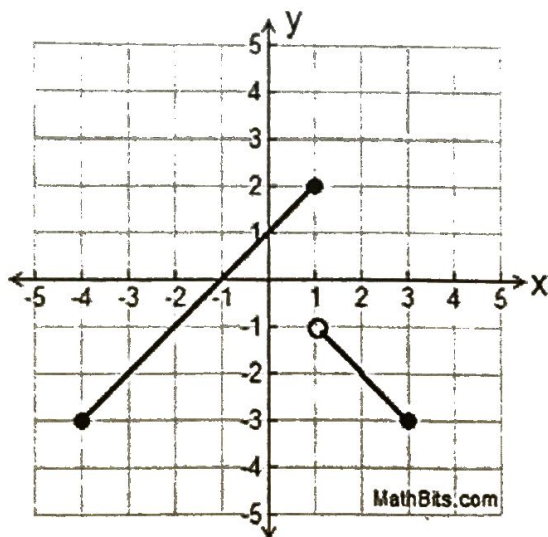
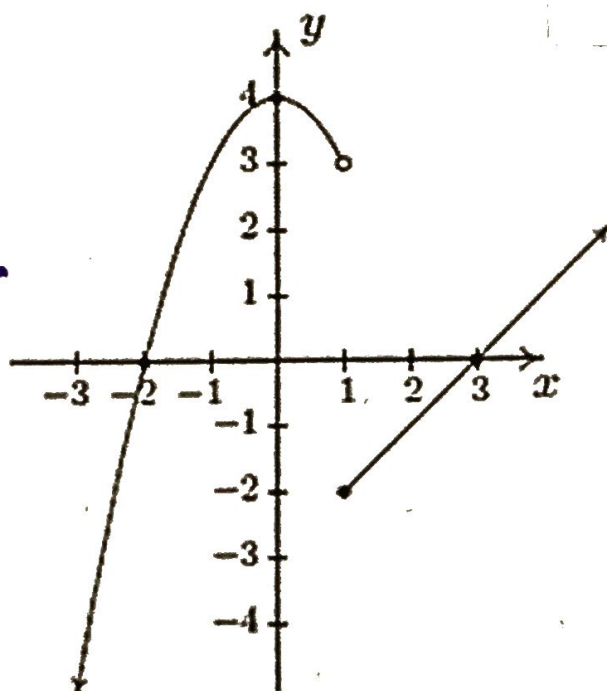


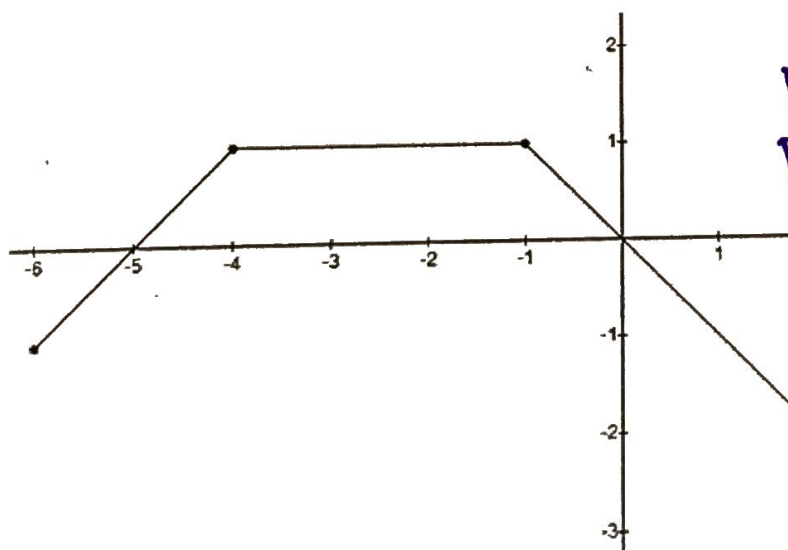
Key



Increasing:	$[-4, 1]$
Decreasing:	$(1, 3]$
Domain:	$[-4, 3]$
Range:	$[-3, 2]$
Maximum:	$(1, 2)$
Minimum:	$(-4, -3) + (3, -3)$
Intercepts:	$x: (-1, 0)$ $y: (0, 1)$



Increasing:	$(-\infty, 0) + [1, \infty)$
Decreasing:	$(0, 1)$
Domain:	$(-\infty, \infty)$
Range:	$(-\infty, \infty)$
Maximum:	$(0, 4)$ rel.
Minimum:	$(1, -2)$ rel.
Intercepts:	$x: (-2, 0) (3, 0)$ $y: (0, 4)$



Inc: $[-6, -4) + (2, 3)$
 Dec: $(-1, 2) + (3, 5]$
 Domain: $[-6, 5]$
 Range: $[-2, 1]$
 Max: $B/M = 4 + -1$
 Min: $(2, -2)$
 x-intercept: $(-5, 0)$
 $(0, 0) (3, 0)$
 y-intercept: $(0, 0)$