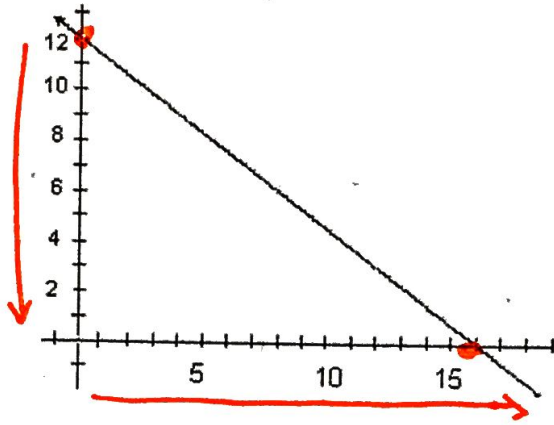


Warm-Up 3/5/18

Write the equation of the lines:

1.

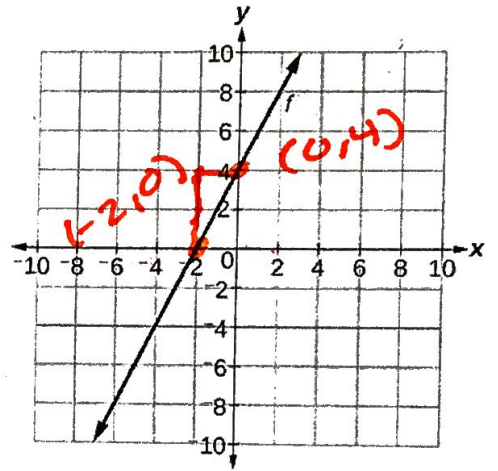


$$\frac{-12 \div 2}{16 \div 2} = \frac{-6 \div 2}{8 \div 2} = \frac{-3}{4}$$

↑
slope

$$y = -\frac{3}{4}x + 12$$

2.



$$\frac{4}{2} = 2$$

↑
slope

$$y = 2x + 4$$